

Dimensional tolerance(mm)					0.10/10 ±3°
0	>30	>60	>100	>150	
~	~	~	~	~	
30	60	100	150		
±0.40	±0.50	±0.70	±0.90	±1.20	

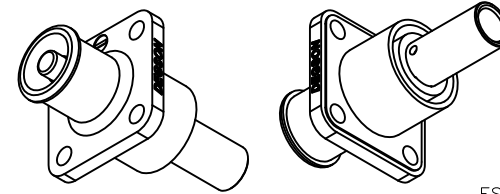
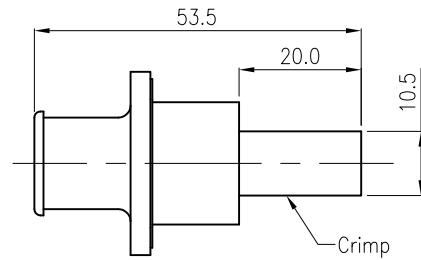
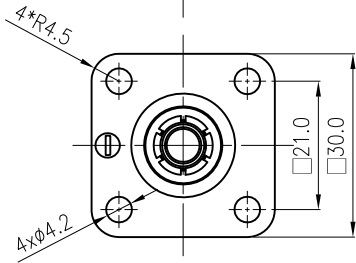
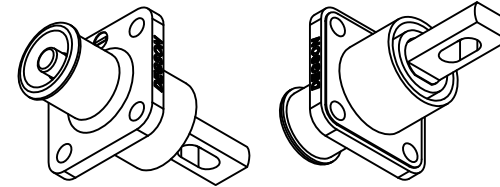
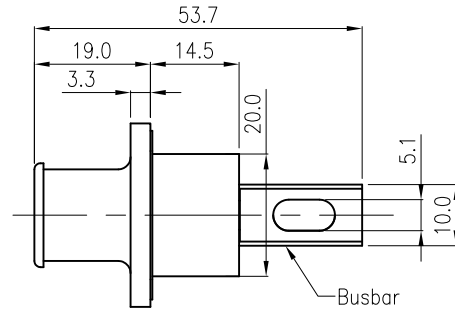
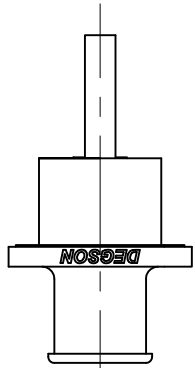
额定电压电流/Rated Voltage/Current	1500V DC/120A
绝缘电阻/Insulation resistance	≥5000MΩ
接触电阻/Contact resistance	≤0.5mΩ
插拔次数/Mechanical working life(mating cycles)	>100
使用温度范围/Operating temperature(°C)	-40~+125 (including temperature rise)
防护等级/Ingress Protection	IP67(Mated)
符合RoHS环保要求/Conform to RoHS	Yes

A

B

C

D



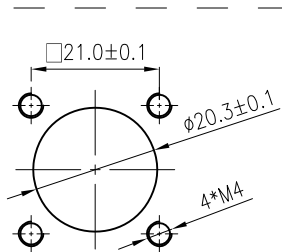
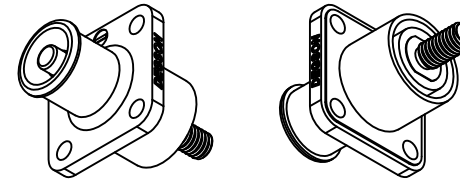
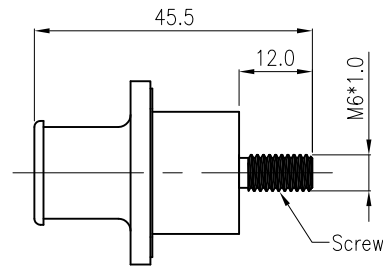
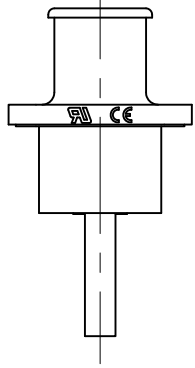
ESS-120A-25-X-XX-00

COLOR: BK : BLACK 负极  
OR : ORANGE 正极  
RD : RED 正极

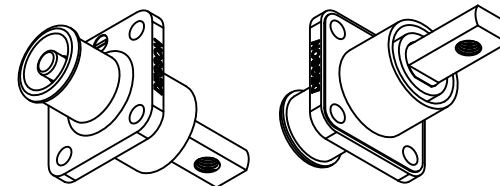
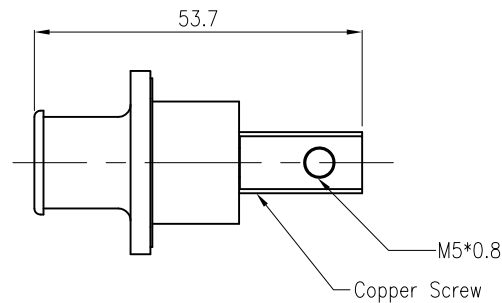
CONTACT TERMINATION: B : Busbar  
C : Crimp  
S : Screw  
B/S : Copper Screw

WIRE RANGE: 25mm<sup>2</sup>

CURRENT : 120A



Recommended Panel Cut-Out



MATERIAL:		SURFACE:						
MAT NO.:		宁波高松电子有限公司 NINGBO DEGSON ELECTRICAL CO., LTD						
STATUS:	/							
APPD:								
CHKD:								
DRFT: Chen C 2022.08.22		NAME:	ESS-120A-25-X-XX-00					
REV	ECN	DESCRIPTION	DRFT	DATE	DRAWING NO.:	/	REV	00
⊕	◁	SIZE: A4	mm (inch)	TYPE: CUSTOMER DRAWING	SCALE: 1:1	SHEET	1/1	

Transfer or duplication of this document as well as the utilization or communication of its contents are prohibited unless explicit authorization is granted. Violations will be liable for compensation. All rights reserved for patent, utility, model or designs registrations. 除非给予明确授权，否则禁止转让、复制、利用、交易本文件中的内容。侵犯者将承担法律责任。本公司保留对涉及发明、实用新型和外观设计的所有权利。